

TOSIBOX®

Lock 500/500i Quick Start Guide



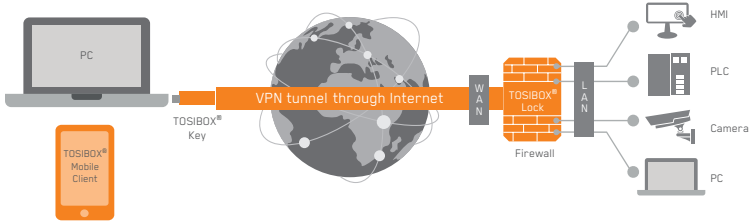
Copyright © Tosibox Oy, 2021

1 Lock ile Key'in Eşleştirilmesi



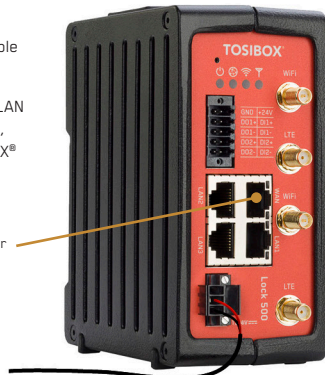
1. Connect the operating voltage of 12-48 V DC to the Lock and wait for 1 minute. In case you have a product version with Power Source kit, use the conversion cable. It converts the AC adapter's coaxial connector output to stripped wires that are needed to power the Lock 500. Follow the polarity symbols in the front panel. Use + and - terminals to power the device.
2. Insert the Key into the USB port of the Lock. When the LED on the Key turns off, (after approx. 10 seconds) the matching is complete, and you can remove the Key from the USB port.
3. Go to **2a** if deploying into broadband networks (ethernet) or **2b** if deploying into mobile networks (Lock 500i only). If deploying Locks as DHCP client into existing networks, please see the TOSIBOX® user manual.

2a Deploying into Broadband Networks




1. Connect an Internet-connected ethernet cable to the Lock's WAN port.
2. Plug the devices into the Lock's LAN ports (LAN 1-3). If the devices have static IP addresses, please see *Deploying the Lock* in the TOSIBOX® user manual.

WAN: Internet/xDSL router



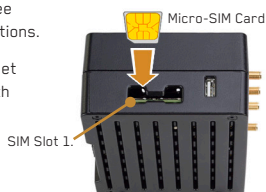
2b Deploying into Mobile Networks with internal LTE modem (Lock 500i only)

You can connect the Lock to the Internet with an internal Modem. Before inserting or removing the SIM card(s), disconnect the Lock power supply.

1. Install the antennas as shown in the picture 1.
2. Insert a SIM card to slot 1 as shown in the picture 2.
3. Connect a computer to any LAN port with an ethernet cable.
4. Check IP and password from the bottom of the Lock. Type IP into your browser to access the Lock's user interface. Log in using "Admin" account. Select Network → Internal Modem and fill in the APN according to your mobile operator settings. Enter PIN code if necessary. Click Save.
5. Plug network devices into the Lock's LAN ports (LAN 1-3). See *Deploying the Lock* in the user manual for static IP configurations.
6. Verify on the Lock user interface status page that the Internet connection is OK. This is also indicated on the front panel with symbol .



Picture 1.

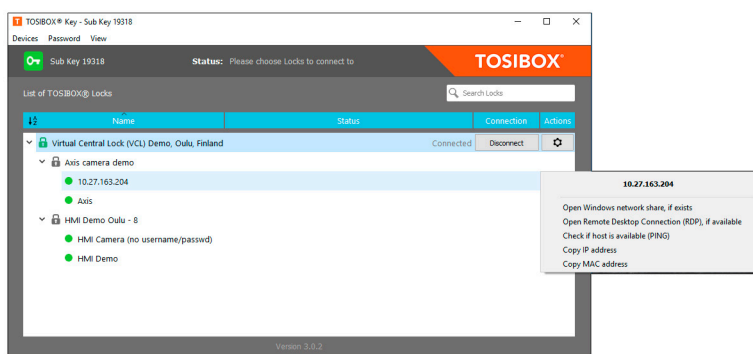


Picture 2.




For more information and latest supported modem models, visit www.tosibox.com/support

3 Using the Key

To install the Key software, insert the TOSIBOX® Key into the USB port of your computer.



The TOSIBOX® Key user interface shows all Lock devices matched to the Key and the network devices connected to them. For more options, click  or .

-  The Lock is connected to the Internet and the Key has a remote connection to the Lock.
-  The Lock is connected to the Internet, but the Key doesn't have a remote connection to the Lock.
-  The Lock is not connected to the Internet.

DECLARATION OF CONFORMITY

Hereby, Tosibox Oy declares that the radio equipment type Lock 500 is in compliance with Directive 2014/53/EU. The full text of the EU declaration of conformity is available at www.tosibox.com/documentation-and-downloads

FEDERAL COMMUNICATION COMMISSION INTERFERENCE STATEMENT

This device complies with FCC part 15 of the FCC rules. Operation is subject to the following two conditions: (1) This device may not cause harmful interference, and (2) this device must accept any interference received, including interference that may cause undesired operation. FCC Caution: Any changes or modifications not expressly approved by the party responsible for compliance could void the user's authority to operate this equipment.

Lock 500 FCC ID: 2AHCNLOCK500I / IC: 25009-LOCK500IC, **Lock 500iC** FCC ID: 2AHCNLOCK500I, contains FCC ID: N7NEM7455 / IC: 25009-LOCK500IC, contains IC: 2417C-EM7455, **Lock 500iD** FCC ID: 2AHCNLOCK500I, contains FCC ID: N7NEM755 / IC: 25009-LOCK500IC, contains IC: 2417C-EM755.

This radio device has been tested to operate with the external antenna types listed below with the maximum permissible gain and required antenna impedance for each antenna type indicated. Antenna types not included in this list, having a gain greater than the maximum gain indicated for that type, are strictly prohibited for use with this device. **Lock 500**: Wi-Fi monopole antenna, 50 ohm, max peak gain 2.0 dBi. **Lock 500iC/D**: Wi-Fi monopole antenna, 50 ohm, max peak gain 2.0 dBi, LTE dipole antenna, 50 ohm, max peak gain 3.0 dBi.

This device is UL listed in USA and Canada with UL file number E497243.

INDUSTRY CANADA STATEMENT

This device complies with Industry Canada license-exempt RSS standard(s). Operation is subject to the following two conditions: (1) this device may not cause interference, and (2) this device must accept any interference, including interference that may cause undesired operation of the device.

This radio transmitter IC: 25009-LOCK500IC has been approved by ISED to operate with the antenna types listed below with the maximum permissible gain indicated. Antenna types not included in this list, having a gain greater than the maximum gain indicated for that type, are strictly prohibited for use with this device. **Lock 500**: Wi-Fi monopole antenna, 50 ohm, max peak gain 2.0 dBi. **Lock 500iC/D**: Wi-Fi monopole antenna, 50 ohm, max peak gain 2.0 dBi, LTE dipole antenna, 50 ohm, max peak gain 3.0 dBi.

Under ISED regulations, this radio transmitter may only operate using an antenna of a type and maximum (or lesser) gain approved for the transmitter by ISED. To reduce potential radio interference to other users, the antenna type and its gain should be so chosen that the equivalent isotropically radiated power (e.i.r.p.) is not more than that necessary for successful communication!

This equipment should be installed and operated with a minimum distance of 20 cm between the antenna and the user or bystanders.

Patented, incl. US8831020, US9900178, US14/119753, US14/39015.



Compliance with
IMDA Standards
DB107332

IMDA Standard only applies to
TBL5iB

Download user manual
www.tosibox.com/documentation-and-downloads

Visit Support
www.tosibox.com/support/